



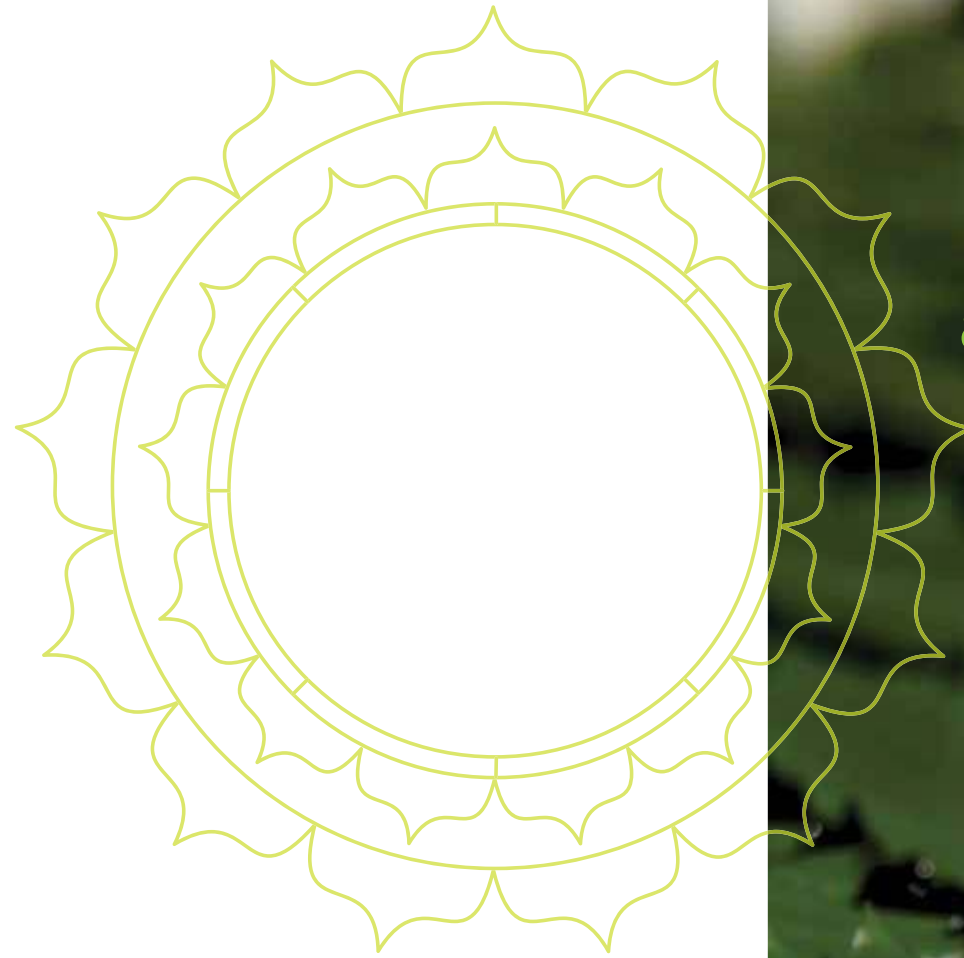
**Lumbini**<sup>TM</sup>  
Terrace  
homes  
Experience an enlightened lifestyle

- positive spaces
- zen state of mind
- living in beauty
- playfulness
- freedom of facilities
- a community of buddha's
- enlightened architecture
- one with nature

the eightfold path  
to enlightened living

Lumbini<sup>TM</sup>  
Terrace  
homes  
Experience an enlightened lifestyle

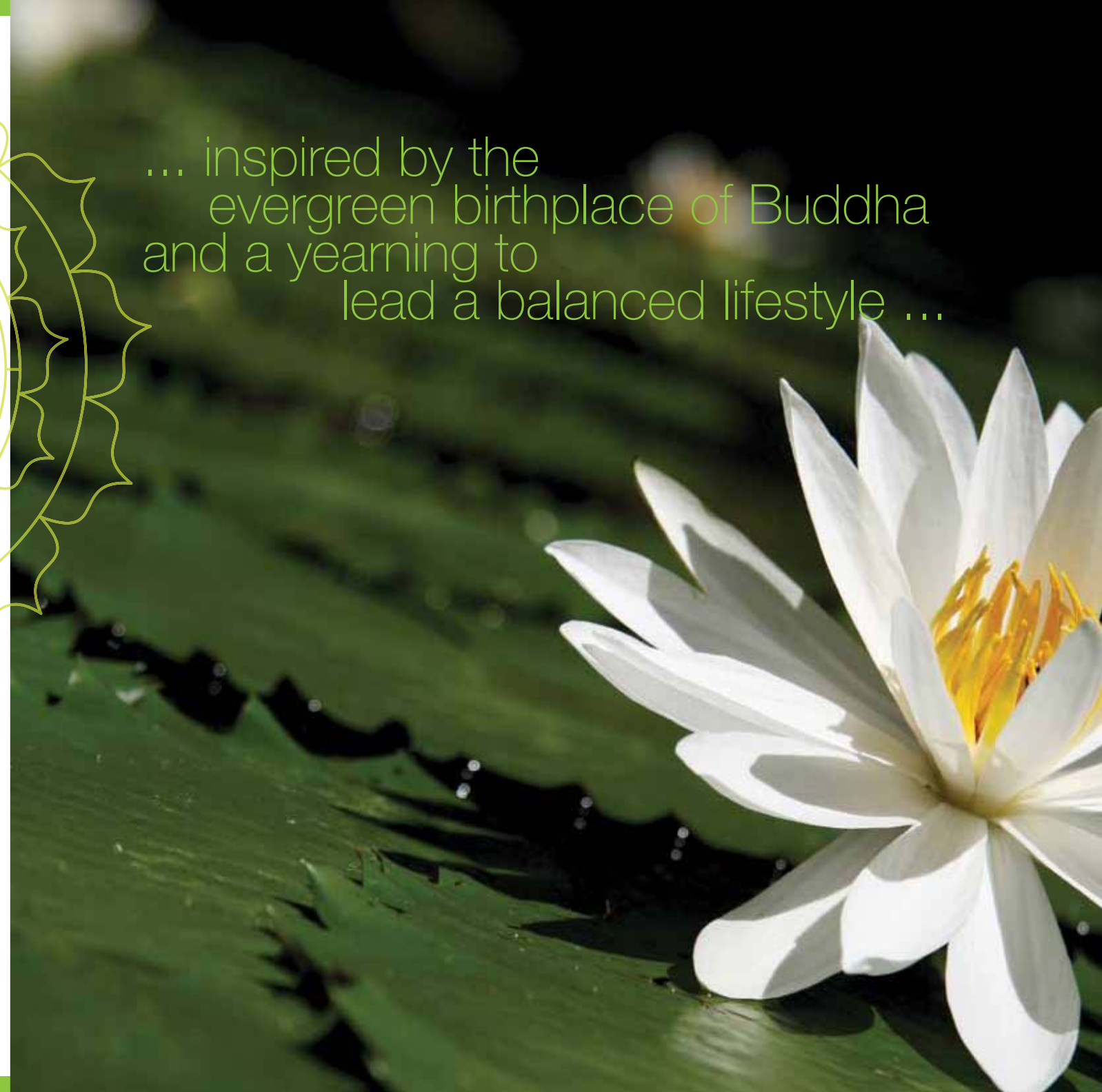
Sector - 109, Gurgaon



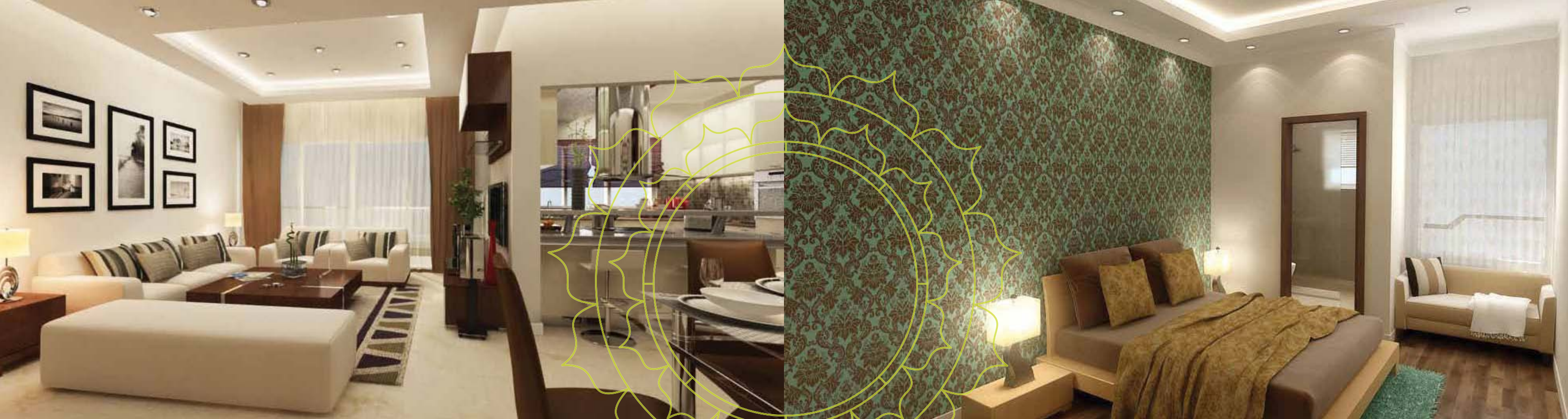
... inspired by the  
evergreen birthplace of Buddha  
and a yearning to  
lead a balanced lifestyle ...

**M**odern life is full of conflicts. The more we have, the more we desire. The more we accomplish, the emptier we feel. An answer to this conundrum is Lumbini Terrace Homes. Built to invoke an enlightened lifestyle, these homes come with all conceivable amenities carefully wrapped in sylvan tranquility.

Lumbini is inspired by the evergreen birthplace of Buddha and a yearning to lead a balanced lifestyle. The long open balconies and intelligent architecture give you ample space to come closer to your spiritual self and experience calm like never before. Located at one of the most envied locations, barely minutes from the Gurgaon – Delhi border, Lumbini Terrace Homes is a unique residential offering by the much experienced multifaceted Brisk Group.







## Positive Spaces

**Spacious and well-lit, it's like inviting nature indoors**

Lumbini Terrace Homes is a unique concept of bringing nature alive within your home. Optimum utilization of space, harmonious planning and intelligent design make these homes a repository of sunlight and fresh air.

[Terrace Homes](#)

## Zen State of Mind

**That perfectly undisturbed sound sleep. That musical silence. Let's explore it**

Lumbini is an untiring search for peace and the acceptance of the self, as a part of the whole. In keeping with this, Lumbini nurtures an ambience, which brings the self closer to your surroundings. Be it the reassuring security or the wellness gym, there is nothing we haven't thought of to complete your bliss.

[Meditation Hall](#) • [Yoga Amphitheater](#)

## Living in Beauty

**They say a thing of beauty is joy forever. And forever is here**

Sector 109, on the spacious upcoming eight-lane 150 mtrs wide Dwarka-Gurgaon Expressway, barely minutes from IGI airport, is one of the most sought after addresses' in Delhi-NCR. This nature's bounty, Lumbini is complimented with a forest like experience, testimony to the fact that true blessedness is to live a life surrounded by beauty.

[Surrounded by Greens](#)

## Playfulness

**If you lost the child in you, there would never be a new thing to experience**

Lumbini gives you many of those wonderful childhood moments with an array of amenities for your playful self.

[Jogging Track](#) • [Cricket Pitch](#) • [Badminton Courts](#) • [Swimming Pool](#)



# Freedom of Facilities

**Sometimes it is good to count your blessings**

"A good memory is one that can remember the day's blessings and forget the day's troubles". Lumbini facilities have been designed to take you away from your troubles and ease up life's tasks.

Utility Shopping • Play School • Pets Area • Kids Play Area

## A Community of Buddha's

**Alone you diminish, together you grow**

The old world charm of knowing each one of your neighbours, of happy togetherness and festive celebrations that's the vision of Lumbini. Lumbini reintroduces the good old times with plenty of options to mingle with your like-minded neighbours, be it at a party held at one of the open verandas or the amphitheater.

Contemporary Clubhouse • Multi-Purpose Hall • Fully Loaded Fitness Gym



## Enlightened Architecture

**You can sense your environs, what if the environs can sense your needs?**

Every structure of Lumbini is sensitive to the needs of its surroundings. It's non-intrusive design naturally merges with the ambience and takes care to imbibe available eco-friendly measures.

Rainwater Harvesting • Sewage Treatment Plant • Earthquake Resistant

## One with Nature

**A pocket-ful of green within your reach**

At Lumbini, the contemporary garden is recreated as a 'Zen' pocket garden, installed within the terrace, with views from every room. With themes to choose from, these installation gardens, bring nature into your home providing serenity and tranquility.

Zen Pocket Garden



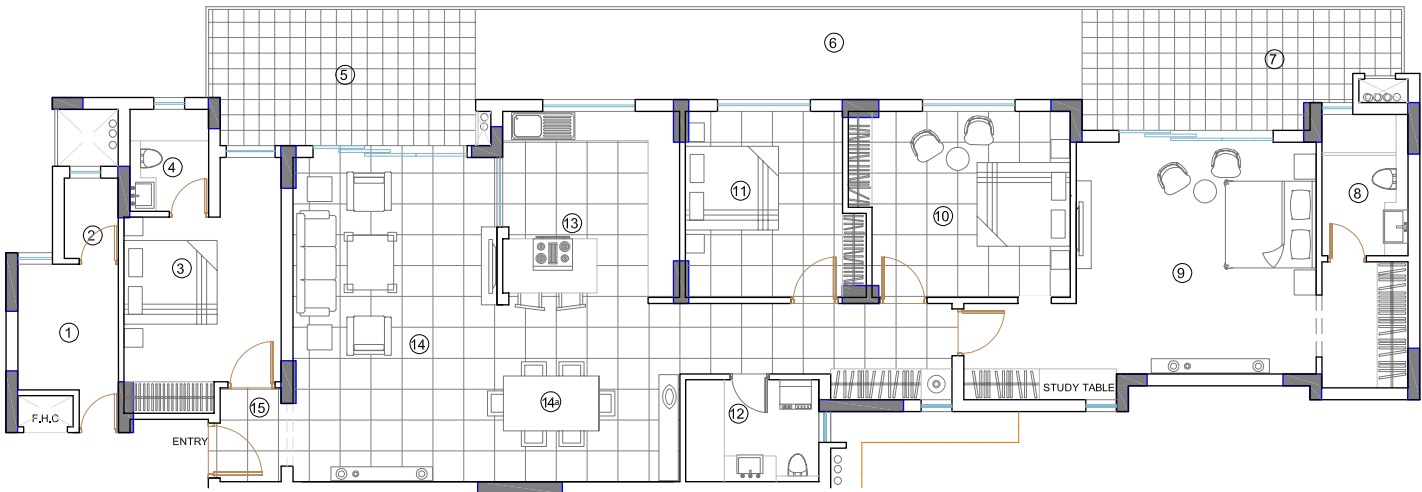


## ELEVATIONS





FLOOR PLANS



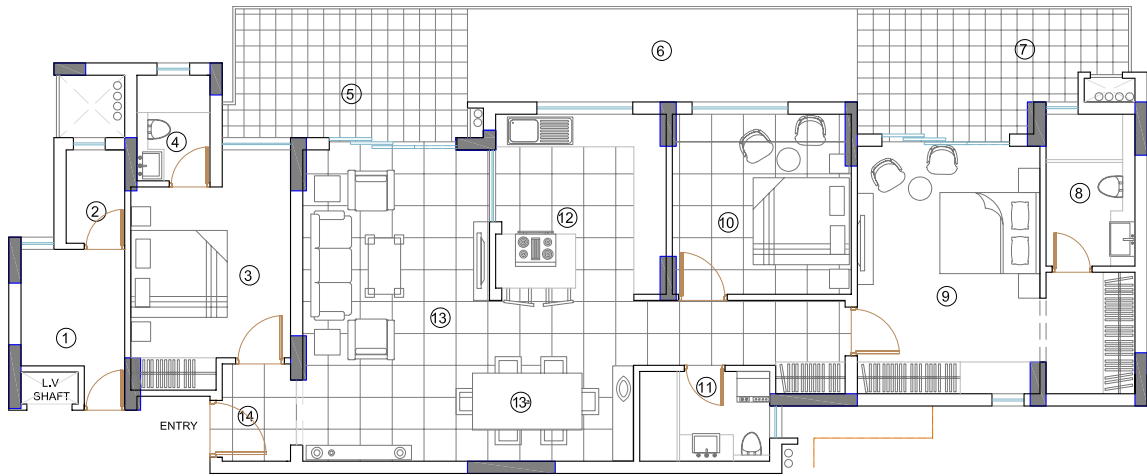
4 BHK UNIT



1 Utility	6'-6" 7'-9"
2 Utility WC	3'-5" 5'-4"
3 Guest Bedroom	10'-0" 10'-5"
4 Guest Bed Toilet	4'-10" 6'-8"
5 Verandah	20'-7" 8'-10"
6 Pocket Garden	36'-6" 5'-11"
7 Verandah	21'-1" 9'-10"
8 Master Toilet - Dress	5'-5" 17'-6"
9 Master Bedroom	15'-3" 15'-3"
10 Kids Bedroom	12'-8" 12'-0"
11 Parents Bedroom	11'-10" 11'-11"
12 Common Toilet	8'-6" 6'-8"
13 Kitchen	10'-9" 12'-6"
14 Living Room	13'-0" 20'-8"
14a Dinning	24'-9" 11'-3"
15 Entrance Lobby	4'-0" 6'-0"

TYPE	TOTAL AREA (in sft)
4 BHK	2836

FLOOR PLANS

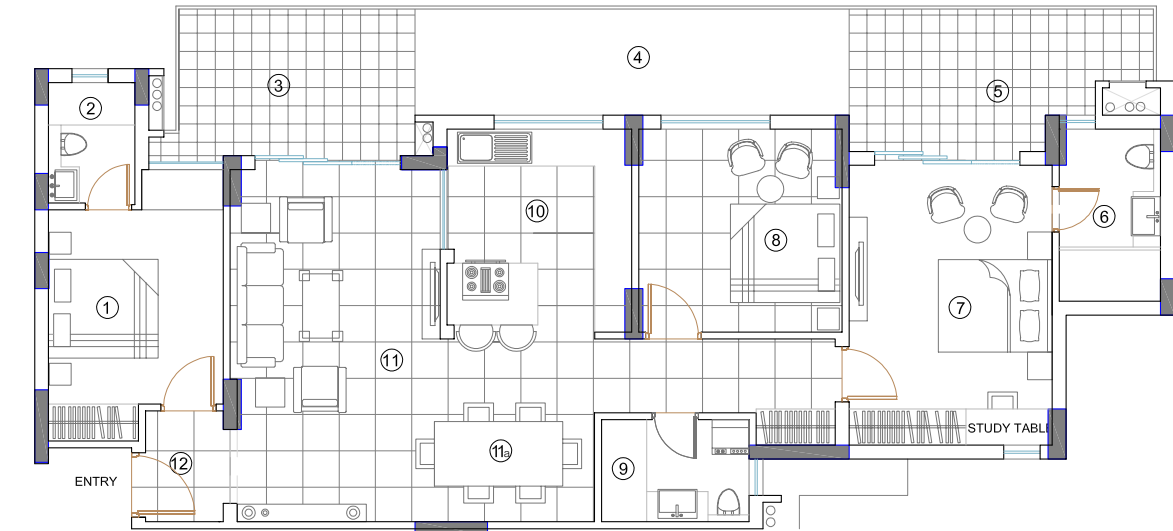


3 BHK + STORE UNIT



1 Utility	6'-5" 7'-2"
2 Utility WC	3'-8" 5'-9"
3 Guest Bedroom	9'-11" 10'-6"
4 Guest Bed Toilet	4'-5" 6'-6"
5 Verandah	15'-0" 8'-1"
6 Pocket Garden	24'-0" 5'-6"
7 Verandah	16'-11" 8'-1"
8 Master Toilet - Dress	5'-5" 17'-3"
9 Master Bedroom	11'-10" 15'-3"
10 Parents Bedroom	11'-1" 11'-1"
11 Common Toilet	8'-0" 5'-8"
12 Kitchen	10'-9" 11'-0"
13 Living Room	11'-6" 19'-2"
13a Dinning	20'-2" 9'-11"
14 Entrance Lobby	4'-2" 6'-0"

TYPE	TOTAL AREA (in sft)
3 BHK + STORE	2177 & 2165



3 BHK UNIT



1 Guest Bedroom	9'-6"	11'-1"
2 Guest Bed Toilet	4'-7"	6'-5"
3 Verandah	13'-7"	8'-1"
4 Pocket Garden	23'-9"	5'-11"
5 Verandah	16'-7"	7'-8"
6 Master Toilet - Dress	6'-0"	9'-5"
7 Master Bedroom	15'-4"	11'-0"
8 Parents Bedroom	11'-1"	11'-0"
9 Common Toilet	7'-11"	5'-5"
10 Kitchen	10'-1"	11'-0"
11 Living Room	11'-5"	19'-1"
11a Dinning	19'-5"	9'-10"
12 Entrance Lobby	4'-11"	5'-7"

TYPE	TOTAL AREA (in sft)
3 BHK	1871

1. Floors

- Italian stone finish vitrified tiles for living and dining areas.
- Laminated wooden flooring for bed room and dressing rooms/ private sitting area.
- Anti-skid tiles for toilets, kitchen and balconies. Ceramic tiles for servant room.
- Kota/Terrazzo for staircase and granite/ marble. Kota stone for lift lobbies/ corridors and entrance foyer.

2. External Fenestrations

- Floor to ceiling powder coated aluminum/ UPVC framing with glass for living, dining, toilets, kitchen and all the rooms
- Appropriate finishes (textured paint) for façade.

3. Fittings & Fixtures

- Modular switches, Provisions for split AC for living, dining and bedrooms.
- Single lever CP fitting and latest Sanitaryware for toilets.
- Modular kitchen (including accessories, stainless steel sink and polished granite counter).
- M.S. Railing for staircase and balconies
- Glass partitions in bath area

4. Walls

- Plastic emulsion of plastered surface for all rooms and entrance foyer.
- Oil bound distemper and weather coat paint.
- Stone cladding with plastic emulsion paint for lift lobbies and corridors.

5. Ceiling

- Oil bound distemper
- POP, gypsum board with plastic emulsion paint for entrance foyer.

6. Structure

- Earthquake resistant (as per latest seismic code) RCC framed structure with external brick walls.

7. Electrical

- Copper electrical wiring throughout in concealed conduit with provision for light points, fan points, power points etc. (TV and Telephone) sockets with protective MCB's /door phones, copper conduit and drain pipe for split AC.

8. Doors & Windows

- UPVC/ Aluminum
- Modular wooden doors.

AMENITIES

Healthy Living

- Fully Loaded Fitness Gym
- Spa Facilities
- Yoga Amphitheater
- Multipurpose Hall
- Jogging Track
- Cricket Pitch and Badminton Courts
- Swimming Pool
- Green Terraces / Pocket Garden

Safety

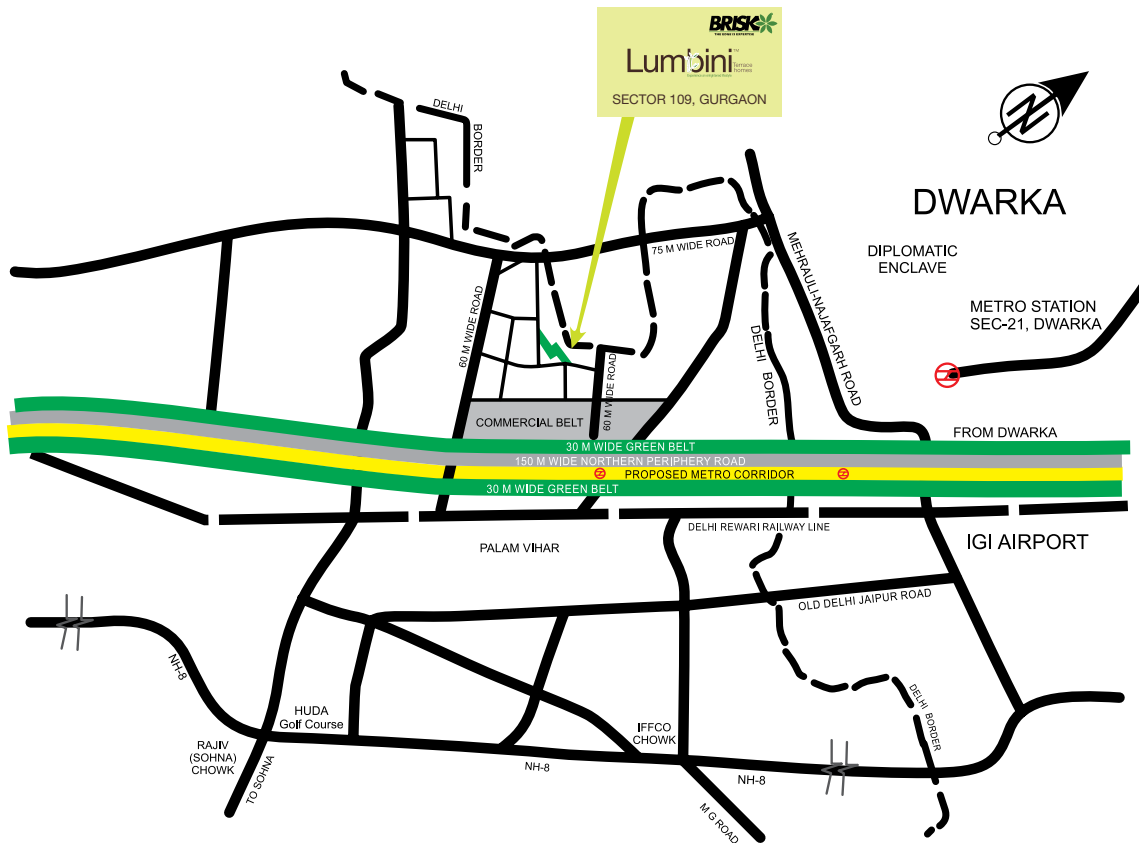
- Child Safe Balconies with Higher Parapets
- Access Control
- Security Guards
- CCTV
- 24x7 Power Back-up

Family and Community

- Kids Play Area - Sandpit and Swings
- Shopping Plaza
- Pets Area
- Community Green
- Play School
- Club House
- Terrace Lawns
- Servants Quarters
- High Speed Lifts
- Water Recycling
- Water Harvesting







## Brisk Infrastructure & Developers Pvt. Ltd.

Corporate Office:

1B-1C, Second Floor, The Plaza Mall, M.G. Road, Gurgaon - 1220021

Tel# 0124 4308530 to 36 Fax# 0124 4308537

Site Office: Sector-109, Gurgaon -1220021

Email: info@brisk.in



DISCLAIMER: All material including images, drawings, layout plans, area sheets, dimensions, specifications etc are indicative artistic renditions and are used only for graphic representation of information. This information is subject to change at any point of time at the sole discretion of the company in consultation with its body of experts/consultants, for the larger interest and betterment of the project. The company shall not be liable for any loss or damage as caused or which may be caused weather direct or indirect to any of the party concerned owing to such changes.